

# ZytoLight® SPEC ERBB2/D17S122 Dual Color Probe



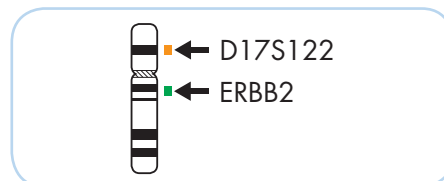
## Background

The ZytoLight® SPEC ERBB2/D17S122 Dual Color Probe (PL148) is intended to be used for the qualitative detection of amplifications involving the human ERBB2 gene as well as the detection of the D17S122 locus in formalin-fixed, paraffin-embedded specimens by fluorescence *in situ* hybridization (FISH). The probe is intended to be used in combination with the ZytoLight® FISH-Tissue Implementation Kit (Prod. No. Z-2028-5/-20). The product is intended for professional use only. All tests using the product should be performed in a certified, licensed anatomic pathology laboratory under the supervision of a pathologist/human geneticist by qualified personnel. The probe is intended to be used as an aid to the differential diagnosis of various cancers and therapeutic measures should not be initiated based on the test result alone.

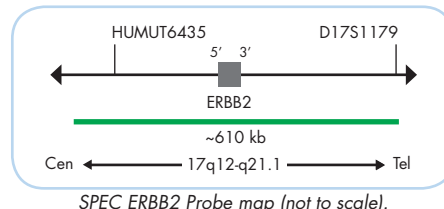
## Probe Description

The ZytoLight® SPEC ERBB2/D17S122 Dual Color Probe is composed of:

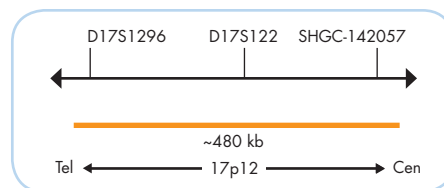
- ZyGreen (excitation 503 nm/emission 528 nm) labeled polynucleotides (~10 ng/µl), which target sequences mapping in 17q12-q21.1\*\* (chr17:37,572,531-38,181,308) harboring the ERBB2 gene region.
- ZyOrange (excitation 547 nm/emission 572 nm) labeled polynucleotides (~4.5 ng/µl), which target sequences mapping in 17p12\*\* (chr17:14,954,785-15,434,017) harboring the D17S122 locus.
- Formamide based hybridization buffer



Ideogram of chromosome 17 indicating the hybridization locations.



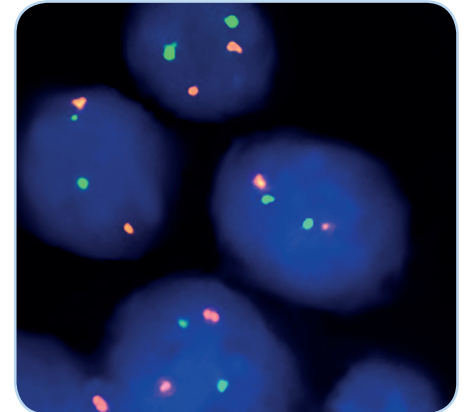
SPEC ERBB2 Probe map (not to scale).



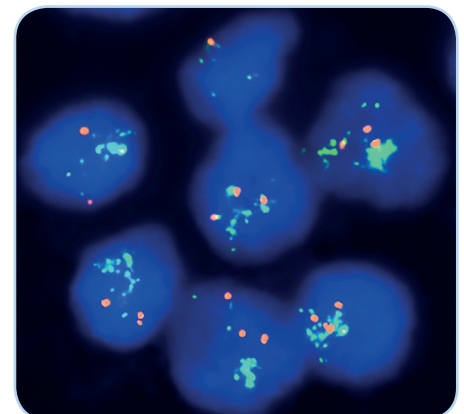
SPEC D17S122 Probe map (not to scale).

## Results

In a normal interphase nucleus, two orange and two green signals are expected. In a cell with amplification of the ERBB2 gene locus, multiple copies of the green signal or green signal clusters will be observed.



Normal interphase cells, ERBB2 (green), D17S122 (orange).



Example of an aberrant signal pattern: Breast carcinoma tissue section, ERBB2 gene cluster (green), D17S122 (orange).

Prod. No.	Product	Label	Tests* (Volume)
Z-2190-50	ZytoLight SPEC ERBB2/D17S122 Dual Color Probe CE IVD	●/●	5 (50 µl)
Z-2190-200	ZytoLight SPEC ERBB2/D17S122 Dual Color Probe CE IVD	●/●	20 (200 µl)
Related Products			
Z-2028-5	ZytoLight FISH-Tissue Implementation Kit CE IVD Incl. Heat Pretreatment Solution Citric, 150 ml; Pepsin Solution, 1 ml; Wash Buffer SSC, 210 ml; 25x Wash Buffer A, 50 ml; DAPI/DuraTest-Solution, 0.2 ml		5
Z-2028-20	ZytoLight FISH-Tissue Implementation Kit CE IVD Incl. Heat Pretreatment Solution Citric, 500 ml; Pepsin Solution, 4 ml; Wash Buffer SSC, 560 ml; 25x Wash Buffer A, 100 ml; DAPI/DuraTest-Solution, 0.8 ml		20

\* Using 10 µl probe solution per test. IVD labeled products are only available in certain countries. All other countries research use only! Please contact your local dealer for more information.

\*\*According to Human Genome Assembly GRCh37/hg19