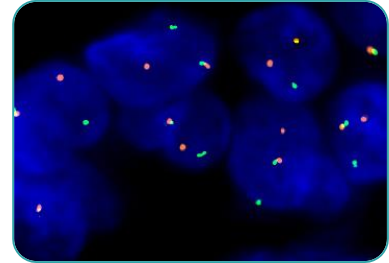




ZytoMation® Probes for fully automated FISH

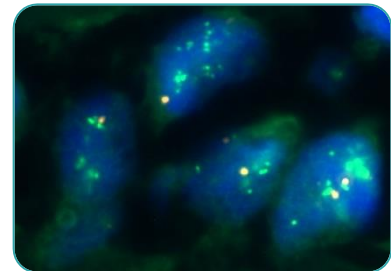
The **ZytoMation ROS1 Dual Color Break Apart FISH Probe** (Product No. Z-2298-5.1ML) is an automation probe designed to detect translocations involving the chromosomal region 6q22.1 harboring the ROS proto-oncogene 1, receptor tyrosine kinase (ROS1, a.k.a. MCF3) gene. Translocations affecting ROS1 have been detected in glioblastoma, cholangiocarcinoma, and non-small cell lung cancer (NSCLC). GOPC has found to be fused to ROS1 in NSCLC and the fusion can be detected with this probe. GOPC-ROS1 fusions result from interstitial deletion of approx. 240 kb on 6q22.1.

First evidence suggests that administration of ROS1 kinase inhibitors may represent a very effective therapeutic strategy in NSCLC patients harboring activating ROS1 rearrangements.



Lung cancer tissue section with translocation of the ROS1 gene as indicated by one non-rearranged orange/green fusion signal and one orange and one separate green signal.

The **ZytoMation ERBB2/CEN 17 Dual Color FISH Probe** (Prod. No. Z-2292-5.1ML) is an automation probe designed for the detection of ERBB2 gene amplification frequently observed in solid malignant neoplasms, e.g., breast cancer or gastric cancer samples. The ERBB2 gene (a.k.a. HER2 and NEU) is located in the chromosomal region 17q12 and encodes a 185-190 kDA transmembrane glycoprotein, p185, acting as a cellular growth factor receptor. ERBB2 is a member of the Erb-b2 receptor tyrosine kinase (RTK) family, also including EGFR, ERBB3, and ERBB4. Currently, clinical trials for Herceptin® (trastuzumab) for targeted therapy are ongoing.



Breast cancer tissue section with amplification of the ERBB2 gene locus as indicated by multiple copies of the green signal in each nucleus.

To receive more details of our **ZytoMation® Product Line** please visit our homepage :

<https://www.zytovision.com/products/zytomation>

- Datasheet
- Instruction for use
- MSDS

Prod. No.	Product	Label	Test* (Volume)
Z-2292-5.1ML	ZytoMation ERBB2/CEN 17 Dual Color FISH Probe	●/●	up to 20 (5.1 ml)
Z-2298-5.1ML	ZytoMation ROS1 Dual Color Break Apart FISH Probe	●/●	up to 20 (5.1 ml)

Related Products
DS9636

Leica Bond FISH Kit

*Using 240 µl probe solution per test.